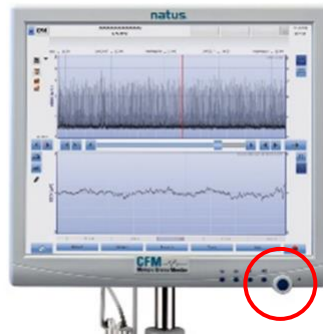


## OLYMPIC BRAINZ MONITOR – QUICK START

Set up the device at the bedside and connect power

**Turn ON** using the **BLUE BUTTON** on the front bottom right side of monitor and wait for system to power up to the main display



Hang the Data Acquisition box from the basket or handle on incubator / warmer

**Prepare for Electrode Application** – you will need the following:

- 2 subdermal needle electrodes
- 1 hydrogel electrode (for ground)
- Electrode positioning aid and Skin Marker
- Alcohol swabs for skin cleaning
- Tape to secure electrodes
- Comb/toothbrush to part the hair if needed
- NuPrep and gauze for cleaning ground electrode site

Measure the infants head keeping the positioning aid vertical and parallel to the face. Align it so that the letter at the ear tragus is the same as the letter at the sagittal suture. The forward edge of the positioning aid should touch the tragus. Mark the two sensor sites, one on each side of the positioning aid, at the end of the arrows (P3/P4 position)



- Clean electrode site with alcohol swab and insert the needle electrode sub dermally.
- Place one electrode at a time and secure
- For ground electrode, select a site with minimal hair on shoulder, neck or behind the ear
- Clean site with NuPrep, remove NuPrep with damp gauze and firmly place electrode



Use the head graphic to connect the sensors into the appropriate receptacles on the data acquisition box. The left posterior sensor goes into P3, the right posterior sensor goes into P4 and the ground sensor plugs into the COMMON receptacle in the middle

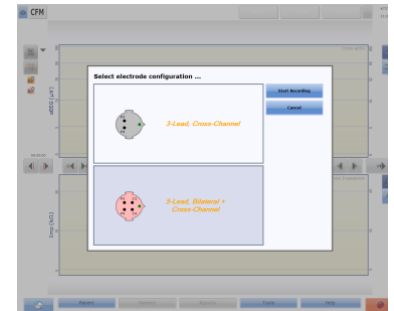
Next, **Select the RECORD** icon on the Monitor interface at the bottom right hand corner.

An onscreen keyboard will pop-up for Patient Record ID, Last Name, and First Name. Type the patient information in the appropriate field. **Touch NEXT** to proceed to the electrode configuration screen On the next screen Select the **3 lead cross channel** electrode configuration.

And **Press START RECORDING** to begin the study.

The device will run a DAB selftest

It is important at this point now to check the signal quality as Good signal quality is required for accurate monitoring of brain activity



**Signal Icon – GREEN** means GOOD signal quality, indicating all electrodes are below 10 kΩ and electrode contact is good.

**Signal Icon – YELLOW** means marginal signal quality and electrode contact and one or more electrodes is above 10 kΩ, yet below a 20 kΩ threshold

**Signal Icon – RED** means poor signal quality and an electrode has exceeded 20 kΩ, Always refer to the head graphic icons in the Impedance view

The following **ICONS** are important to note for operation of the Monitor:



**RECORD ICON** to Start, Pause or Stop a recording



**REVIEW MODE /LIVE MONITORING MODE** – indicated by yellow or green



**LIVE PLAYBACK BUTTON** if in review mode and wish to re-initiate the live recording



**EEG view** – when active will display the raw EEG at bottom section of screen



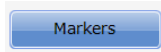
**IMPEDANCE view** – when active, will display impedance at bottom section of screen



**MARKER MODE** Activation – indicates whether marker tracks are active or inactive



**SCORING VIEW** to display the RecogniZe Seizure detection Software and Background Pattern Classification software tracks



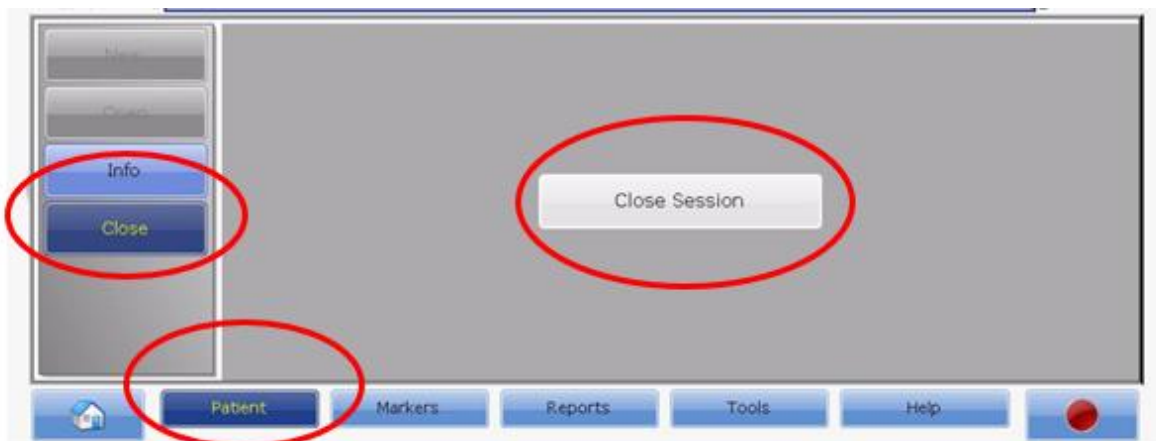
**MARKERS** button in the Main taskbar– to add a specific time stamped marker to the trace



**HOME** button – if you get to a screen that is not familiar to you – touch the HOME Icon to return to the main screen.

### To END the recording:

To close the session and end the recording, touch PATIENT and touch the CLOSE tab on the left side of the dialog box. Select CLOSE SESSION to end and save the recording



### To POWER OFF:

Touch the POWER Icon  in the top left of the screen

Confirm Shutdown.

The system powers down within 15-20 seconds.

**DO NOT** power down by pressing the **Blue power button** on the front of the monitor